

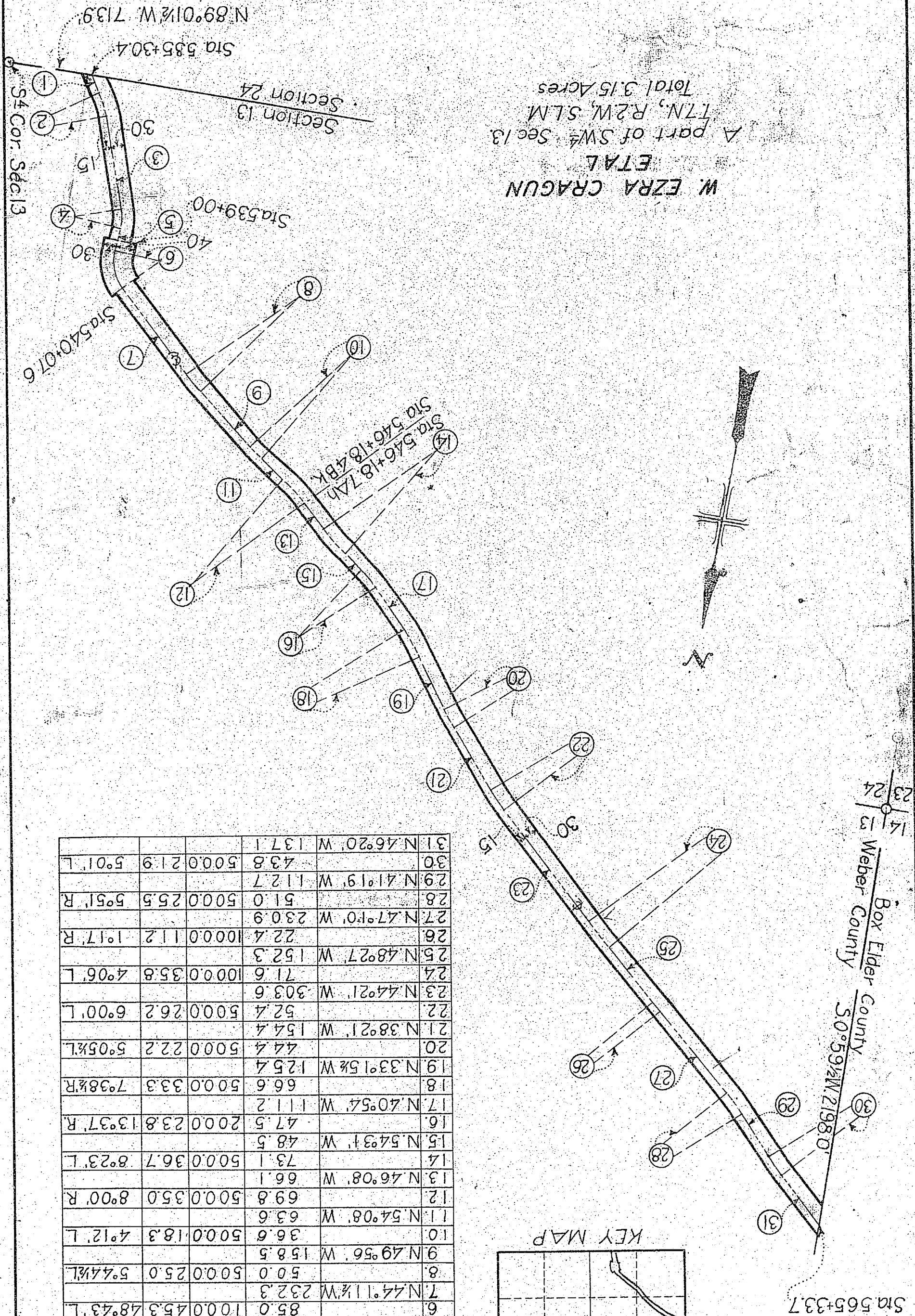
DEPARTMENT OF THE INTERIOR  
 BUREAU OF RECLAMATION  
 OGDEN RIVER PROJECT-UTAH  
 RIGHTS OF WAY  
 OGDEN-BRIGHAM CANAL

DRAWN: C.T.S. SUBMITTED:  
 TRACED: E.W.B. RECOMMENDED:  
 CHECKED: C.M.A. APPROVED:

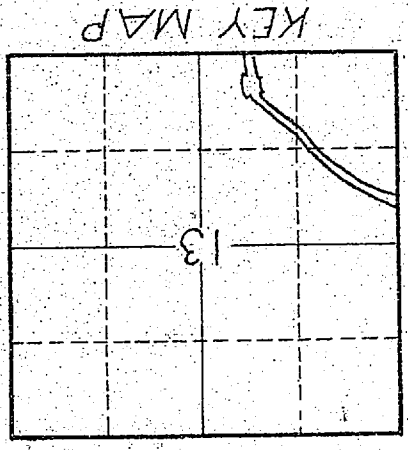
U-D-15810-11-23-37

Scale 1 in = 200 ft

W. EZRA CRAGUN  
 ETAL  
 A part of SW 1/4 Sec 13  
 T7N, R2W, S1M  
 Total 3.15 Acres



No	COURSE	LENGTH	RAD.	TAN Δ	R. or L.
1	N.33°14' W	45.1			
2	N.18°13½' W	205.3			
3	N.18°13½' W	205.3			
4	N.4°31½' E	49.7			
5	N.4°31½' E	49.7			
6	N.44°11½' W	232.3			
7	N.44°11½' W	232.3			
8	N.49°56' W	158.5			
9	N.49°56' W	158.5			
10	N.49°56' W	158.5			
11	N.54°08' W	63.6			
12	N.54°08' W	63.6			
13	N.46°08' W	66.1			
14	N.46°08' W	66.1			
15	N.54°31' W	48.5			
16	N.40°54' W	111.2			
17	N.40°54' W	111.2			
18	N.33°15½' W	125.4			
19	N.33°15½' W	125.4			
20	N.38°21' W	154.4			
21	N.38°21' W	154.4			
22	N.44°21' W	303.6			
23	N.44°21' W	303.6			
24	N.48°27' W	152.3			
25	N.48°27' W	152.3			
26	N.47°10' W	230.9			
27	N.47°10' W	230.9			
28	N.41°19' W	112.7			
29	N.41°19' W	112.7			
30	N.46°20' W	137.1			
31	N.46°20' W	137.1			



Sta 565+33.7

Box Elder County  
 Weber County  
 50°59½' W 2198.0'